

Bicillin & Lidocaine Procedure for Injections



St. Louis
STI/HIV Prevention
Training Center

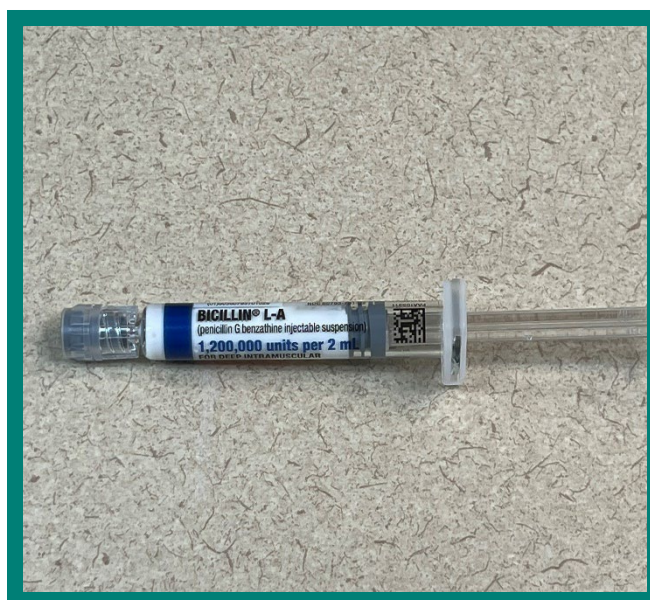
Rationale:

Patients are often anxious about undergoing treatment for syphilis. The treatment involves an intramuscular Bicillin injection in each buttock. The injections can be especially painful because of the volume of viscous medication entering the gluteal muscle. The addition of lidocaine is a safe and effective way to diminish the pain associated with the Bicillin injection. Addressing the fear and anxiety of treatment may also help alleviate the stigma associated with syphilis and encourage patients to seek testing, treatment, and notify their partners.

Supplies Needed for Bicillin Injection

1. Bicillin in a Pre-Filled Syringe

Treatment is administered via two separate, prefilled Bicillin 1.2 MU syringes to be administered in either ventrogluteal or dorsogluteal muscle on each side for total of 2.4 million units.



2. Vial of Lidocaine

A. Lidocaine may come in a glass ampule which requires breaking prior to drawing up the Lidocaine



B. Lidocaine can also come in a plastic vial with a flat top cap and a silicon septa. The needle pierces the septa in order to access the Lidocaine to be drawn into the syringe.

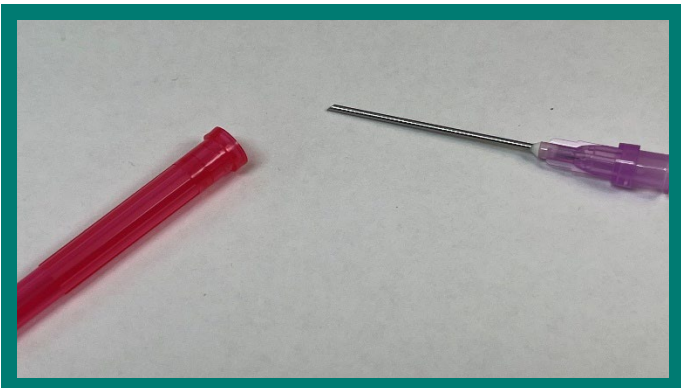
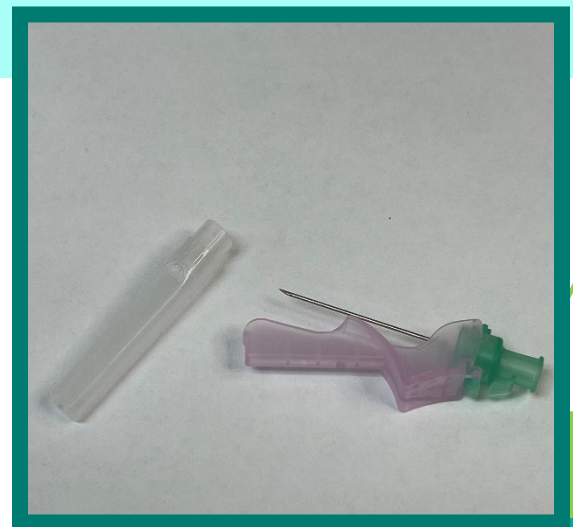


3. Needle for Drawing up the Lidocaine

A. If the Lidocaine comes in a glass ampule, a filtered needle should be used to filter out any potential glass fragments that may have resulted from breaking the ampule open.

*Eliminate step with filtered needle if using plastic vial for Lidocaine**

B. If the Lidocaine comes with a flat top cap, a standard blunt fill needle can be used.



Needles for Injecting Bicillin

*In general, needles that are 20 or 22 gauge and 1 or 1.5 inches long are best for intramuscular injections.

See chart below for additional information*

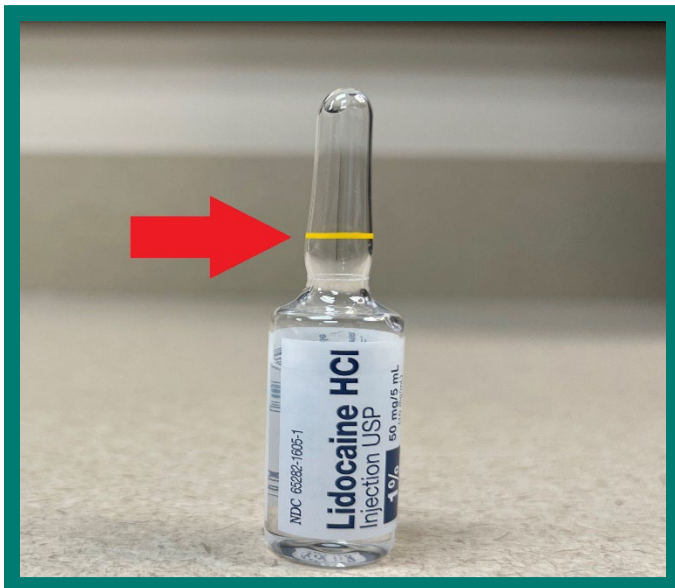
1 Inch Needle	1 – 1.5 Inch Needle	1.5 Inch Needle
Women: 130-152 lbs. (60-70 kg)	Women: 152-200 lbs. (70-90 kg)	Women: 200 or more lbs. (90+ kg)
Men: 130-152 lbs. (60-70 kg)	Men: 152-260 lbs. (70-118 kg)	Men: 260 or more lbs. (118+ kg)

Make Sure You Have All Your Supplies Set Up



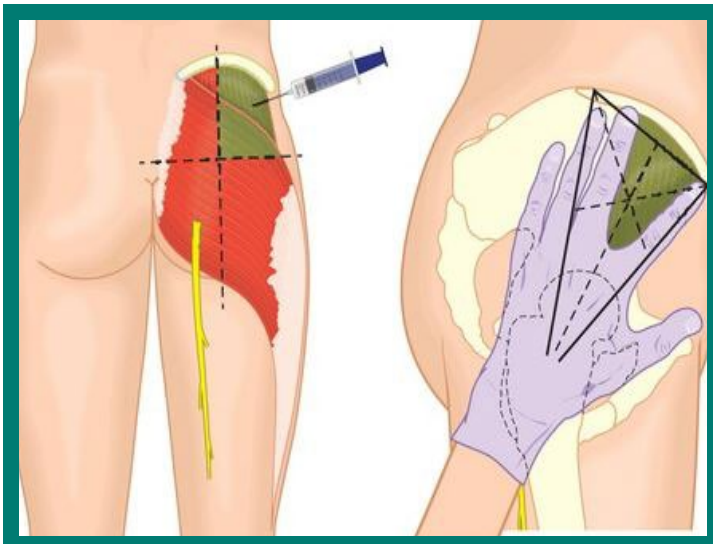
Mixing Instructions for Lidocaine in a Glass Ampule

1. Place the filtered needle on the syringe containing Bicillin



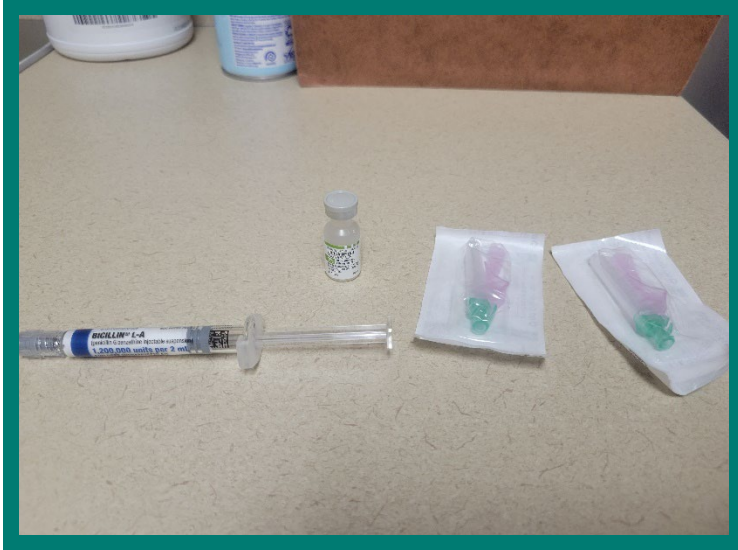
2. Break the glass ampule at the line (as indicated by the red arrow and yellow line).

3. Insert the syringe with the filtered needle into the vial to access the Lidocaine.
4. Draw up 0.5 to 1 mL Lidocaine into the pre-filled Bicillin syringe.
5. Invert the syringe a couple of times and/or roll the syringe between your hands to mix.
6. Remove the filtered needle.
7. Replace with the injection needle on the syringe.
8. Repeat above steps for prefilled Bicillin syringe #2.



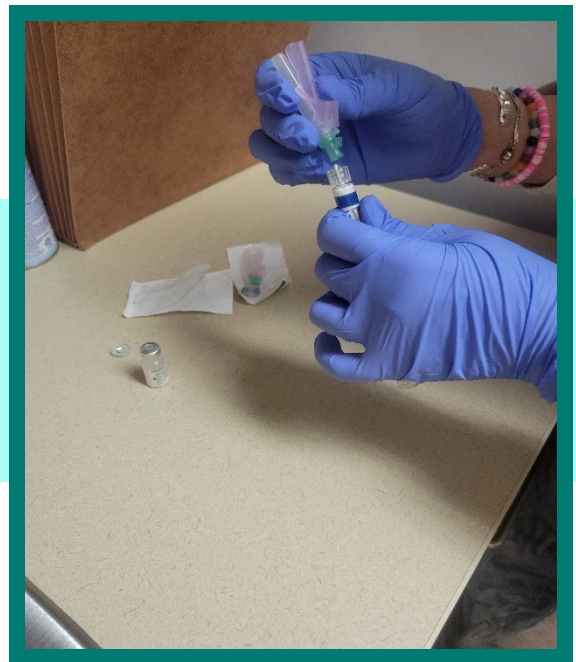
8. Deliver the injection slowly into the ventrogluteal or dorsogluteal muscle to allow the muscle to accommodate the fluid

Mixing Instructions for Lidocaine in a Flat-Topped Cap



**Make Sure You Have All
Your Supplies Set Up**

**1. Place the standard blunt fill
needle on the syringe
containing Bicillin.**



**2. Insert the syringe through
the silicon septa into the
vial to access the
Lidocaine.**

3. Draw up 0.5 to 1 mL Lidocaine into the prefilled Bicillin syringe.
4. Invert the syringe a couple of times and/or roll the syringe between your hands to mix.
5. Remove the blunt fill needle.
6. Replace with the injection needle on the syringe.
7. Deliver the injection slowly into the ventrogluteal or dorsogluteal muscle to allow the muscle to accommodate the fluid.

For additional assistance, please
see our Bicillin and Lidocaine
video of the entire process
(scroll to the bottom of the page)

