



STRUCTURAL INTERVENTIONS IN ACTION

June 28, 2022



Introduction

Matt Willis, he/him

Chief, Local Capacity Building & Program
Development Unit, Prevention Branch,
Office of AIDS

State Co-Chair, California Planning Group

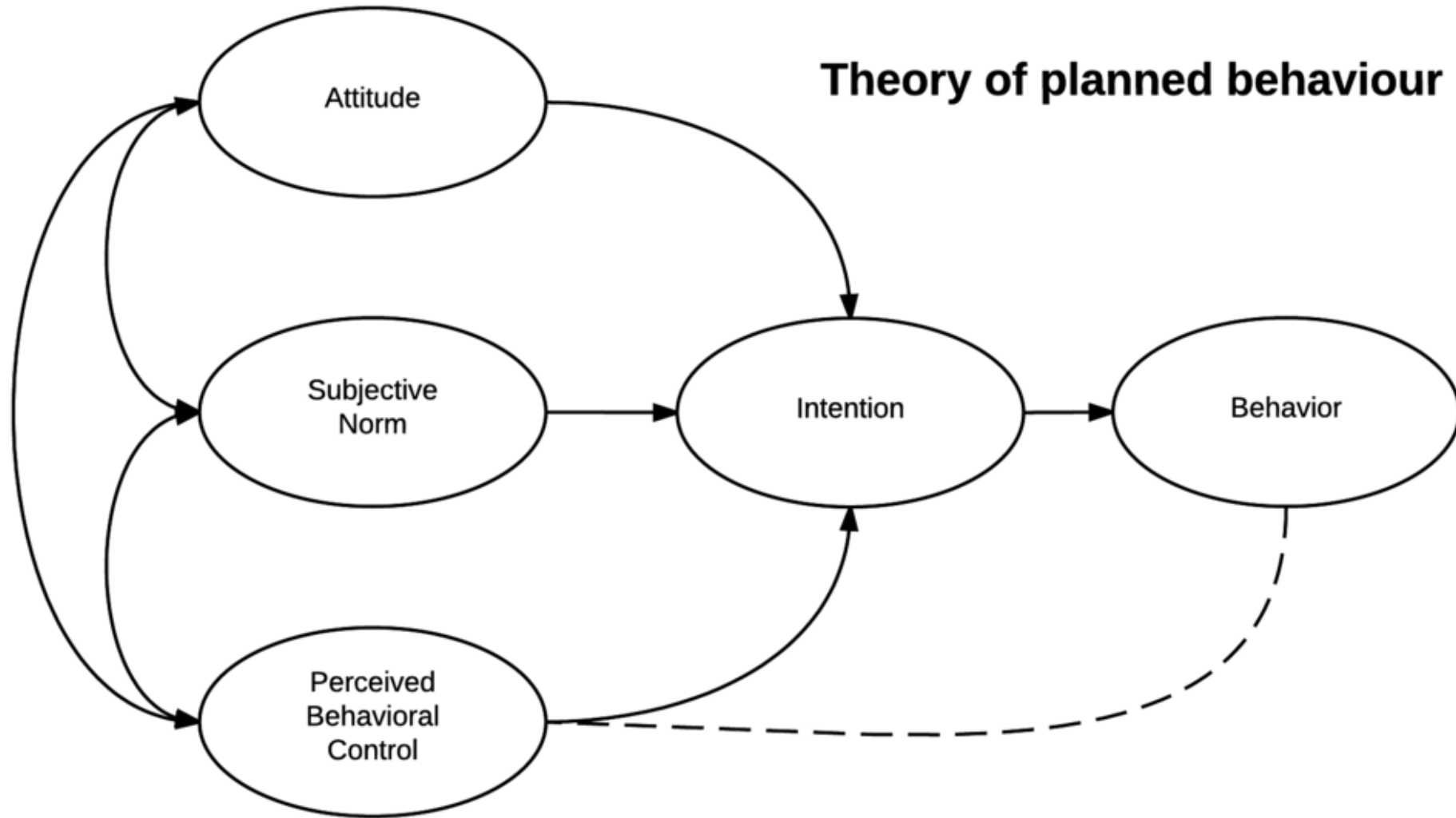
Today, I will highlight

- Structural Interventions that you may already be accomplishing
- Show the value of including Priority Populations in the identification and development of Structural Interventions
- Discuss collaborative work to expand the impact of Structural Interventions

Reducing New Infections by Identifying Current Infections

- Routine Opt-Out Testing (ROOT)
 - Structural Interventions reduce the need for individuals to take action

Theory of planned behaviour



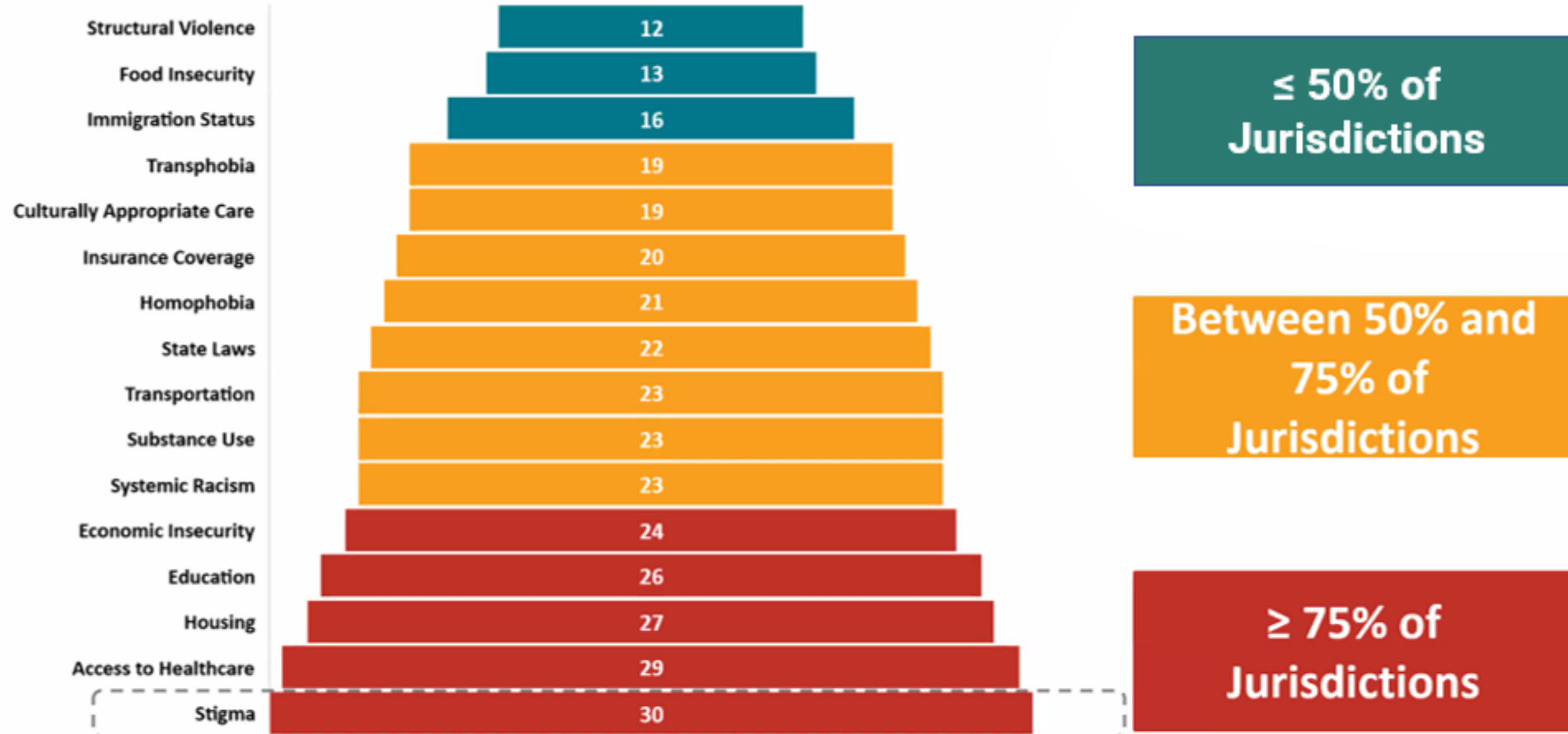
Reducing New Infections by Identifying Current Infections

- Routine Opt-Out Testing (ROOT)
 - Structural Interventions reduce the need for individuals to take action
 - Stigma is reduced when one doesn't need to seek out a "special" request



You want Fries with that?

When HIV screening is treated similar to other health screenings, such as monitoring for diabetes, cholesterol, and blood pressure, HIV screening is normalized.



1. CDC , Accelerating State and Local HIV Planning to End the HIV Epidemic: A Thematic Analysis of EHE Jurisdictional Plans. (unpublished)

Reducing New Infections by Identifying Current Infections

- Routine Opt-Out Testing (ROOT)
 - Structural Interventions reduce the need for individuals to take action
 - Stigma is reduced when one doesn't need to seek out a "special" request
 - ROOT can identify those unaware of an HIV exposure as well as provides the opportunity to speak with those who have avoided seeking HIV testing out of fear and denial.

Reducing New Infections by Identifying Current Infections

- Routine Opt-Out Testing (ROOT)
 - Structural Interventions reduce the need for individuals to take action
 - Stigma is reduced when one doesn't need to seek out a "special" request
 - ROOT can identify those unaware of an HIV exposure and provides the opportunity to test to those who have avoided seeking HIV testing out of fear and denial.

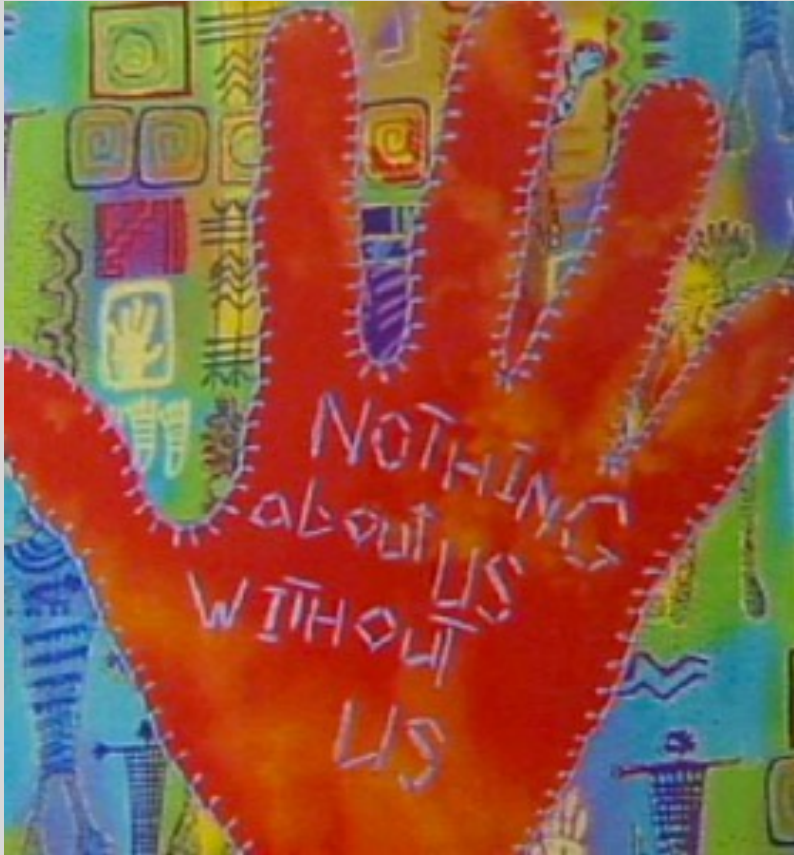
The merits of ROOT are clear, and the outcomes demonstrated when ROOT is implemented prove its effectiveness.

Altering Policies and Procedures is STRUCTURAL INTERVENTION

- What other policies and procedures can be modified to improve services and outcomes?
- Offer hours outside of 9 to 5, M - F
- Change hiring practices to bring those with lived experience into our workforces
- Music and Imagery in your Clinic
- Locate services in venues your Priority Populations frequent or reside
- Not offering HIV screening without also screening for STIs and Hepatitis

The value of including Priority Populations in the identification and development of Structural Interventions

- Community Engagement was a paramount requirement embedded in the National HIV Strategy and the Ending the Epidemics Initiative.
- We have been bringing the Community Voice into Community Planning Groups and Councils, Advisory Committees, and hopefully, in Monitoring & Evaluation
- Working with Community Leaders/Gatekeepers not just to access a population but to guide us in what is needed to support reducing new infections



- “You cannot focus on HIV needs without addressing the needs of the whole person. You need financial stability, accommodation, etc.... You need mental health assistance, even if it is in a group, it is a good start.”

The Value of Community Engagement

- Community Engagement benefits the funder, the contractor and the people being served
- Hearing from people to be served **from the formative phase forward** increases the likely effectiveness of the program
- The want and needs of the community may require you to address areas you had not considered and may require changes in policies, procedures, and bringing additional resources into the program
- The process of community engagement itself builds community and strengthens the overall work toward decreasing the number of new infections.

Addressing the needs of the whole person

*Sorry, not
my Table*



Collaborative Work to Leverage Structural Interventions

How can you respond to these situations?

Your client has a partner(s) of different HIV Status

- Are you offering Status Neutral Services?
 - Collaboration between HRSA and CDC funded programs
- Can your ADAP Enrollment Worker also enroll people in PrEP AP?
 - Develop the role of a status neutral benefits navigator
- Do you offer time for your client and partner together to discuss questions and concerns with you?
 - Do you develop consent forms that allow for clients and partners to be seen together?
 - Have referrals at the ready for common needs and support, get on a first name basis with the people you are referring clients (build collaborative relationships!)

How can you respond to these situations?

An individual diagnosed with an STI has three sexual partners.

- Are you able to assist the individual speak with their partners?

<https://www.stdcheck.com/anonymous-notification.php>

<https://tellyourpartner.org/>

<https://www.bettertoknow.org.au/notify/sms/index.html>

- Can you facilitate the partners being screened and treated?

TakeMeHome® Self-collection HIV, STI, and HCV screening

Orange County 17th Street Clinic



TakeMeHome.Org

- Software App originally designed to provide HIV self-test kits to gay/MSM
- Second Generation offering Dried-Blood Spot Tests
 - Syphilis
 - Hepatitis CIncludes option for self-collection swabs for gonorrhea and chlamydia
- Expanding to other priority populations

How can you respond to these situations?

Your client doesn't have enough gas to attend multiple appointments scheduled on different days

- Tele-visits
- Scheduling visits on the same day
- Review your policies for being late or missing appointments, do they appreciate clients' transportation resources?
- Provide transportation reimbursement...*prior to the visits!*
- Contract with car services such as Lyft and Uber or local taxi companies
- Consider referring to services closer to the client's home

Summary

- Pay attention to the structural interventions already in place.
- Assess your services, what can you do to make them more **A**ccessible, **A**cceptable and **A**vailable to your clients?
- Use technology when it can help achieve the 3 **A**'s.
- Collaborate rather than duplicate, we cannot be all things to all people!
- Let your clients guide you, engage the community and you will learn how to more effectively reach and serve your population and reduce new infections.